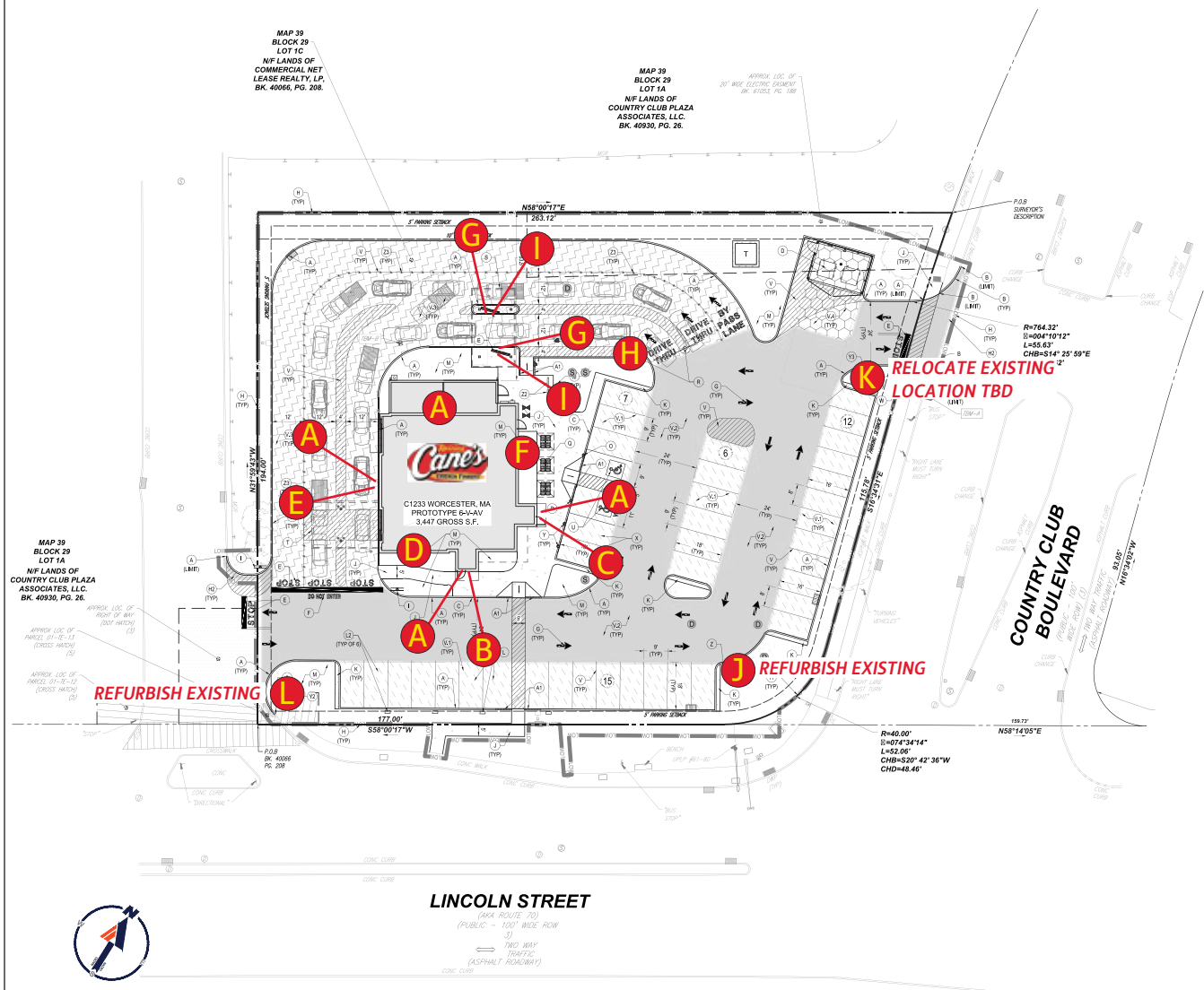




494 Lincoln St/RC1233
 Worcester, MA 01605
 09/30/2024

DRAWING REVISIONS	
DATE	CHANGE
8/28/24	Updated ground signs & notes
9/5/24	Updated directional cladding sizes
9/30/24	Updated siteplan, directional cladding sizes/description, notes

SITEMAP



	QTY.	CODE	DESCRIPTION
A	4	WS-8FT	4x8 Wall Sign
B	1	ONS	Open Sign
C	1	CFNS	Chicken Fingers Neon Sign
D	1	PMRL	Painted Mural
E	1	PAMRL	Painted Arrow Mural
F	1	RD-1	Red Dog
G	2	DTMB	DT Menuboard
H	1	DTPS	Pre Sell Board
I	2	DTSP	Speaker Post
J	1	PYLON	Existing Pylon
K	1	DIR	Relocate Existing Directional (DT)
L	1	DIR	Existing Directional (Enter)

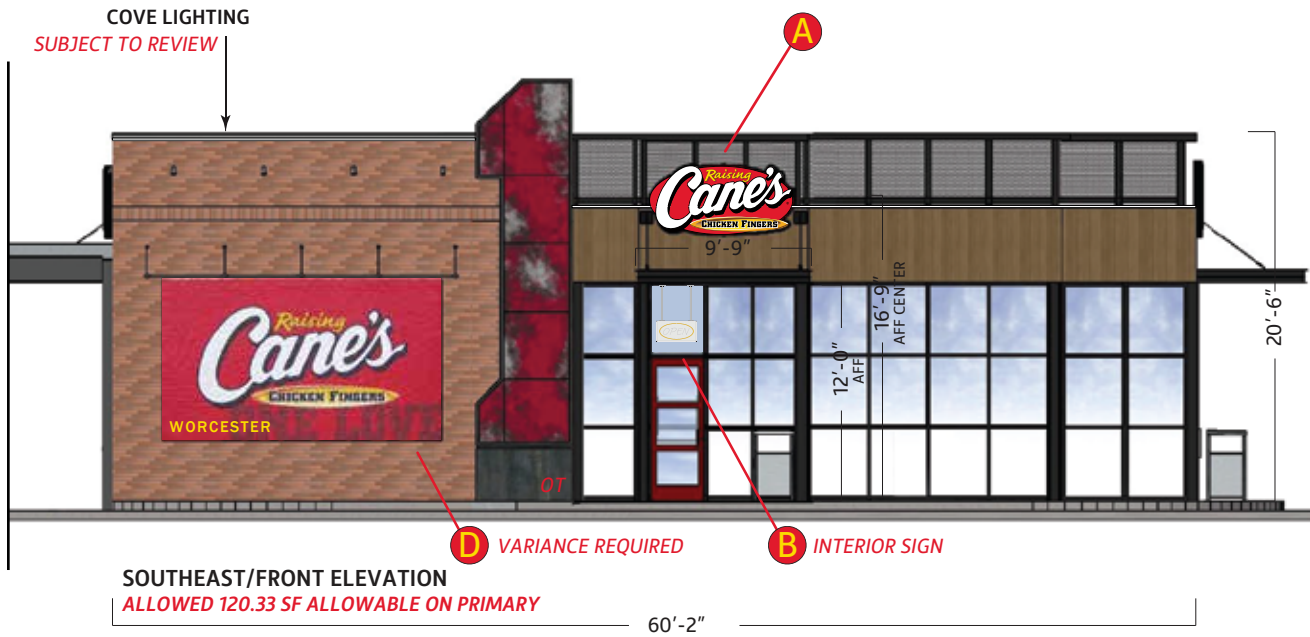


Location: Worcester, MA
Site ID: RC1233

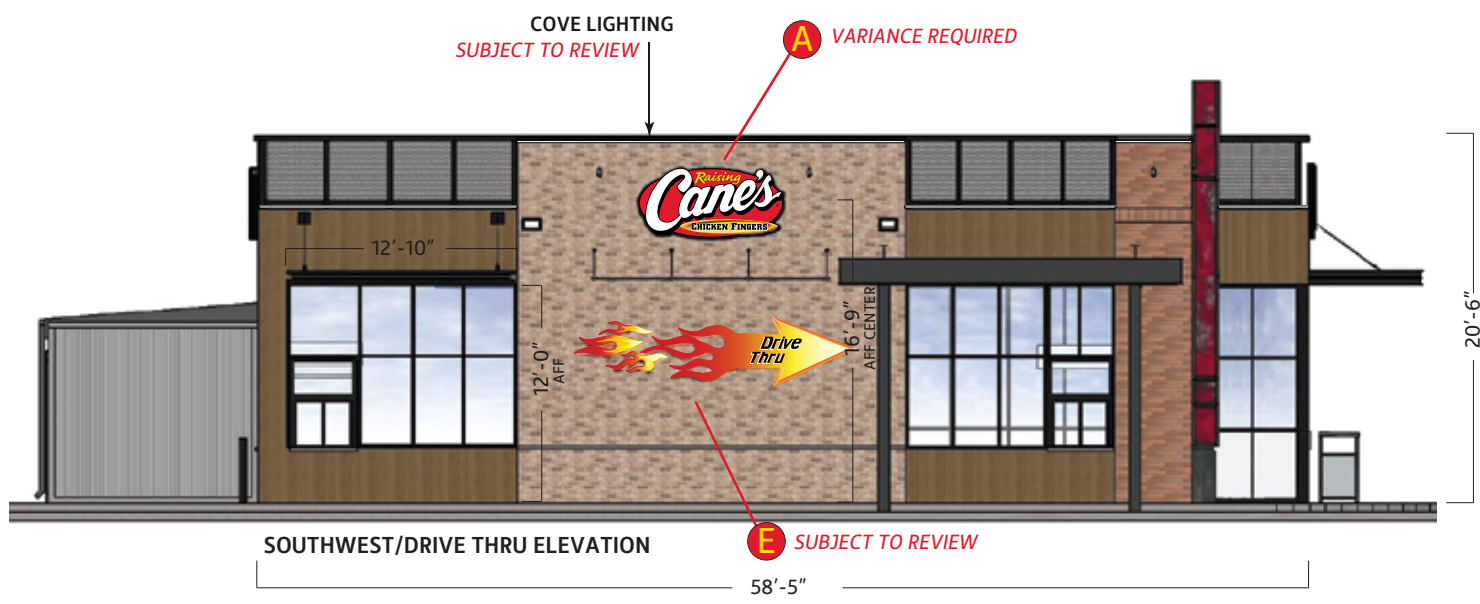
Date: 08/13/2024
AGI PM: Scott Rogers

This document is the sole property of AGI, and all design, manufacturing, reproduction, use and sale rights regarding the same are expressly forbidden. It is submitted under a confidential relationship, for a special purpose, and the recipient, by accepting this document assumes custody and agrees that this document will not be copied or reproduced in whole or in part, nor its contents revealed in any manner or to any person except for the purpose for which it was tendered, nor any special features peculiar to this design be incorporated in other projects.

ELEVATIONS



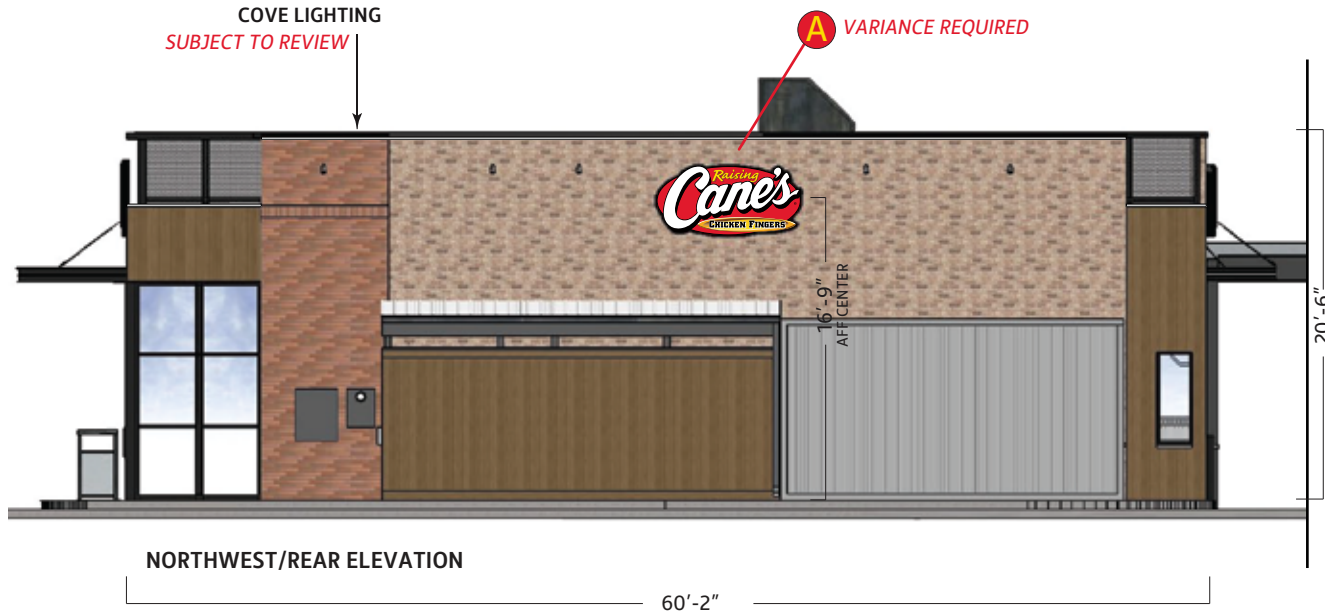
	QTY.	CODE	DESCRIPTION
A	4	WS-8FT	4x8 Wall Sign
B	1	ONS	Open Sign
C	1	CFNS	Chicken Fingers Neon Sign
D	1	PMRL	Painted Mural
E	1	PAMRL	Painted Arrow Mural
F	1	RD-1	Red Dog
G	2	DTMB	DT Menuboard
H	1	DTPS	Pre Sell Board
I	2	DTSP	Speaker Post
J	1	PYLON	Existing Pylon
K	1	DIR	Relocate Existing Directional (DT)
L	1	DIR	Existing Directional (Enter)



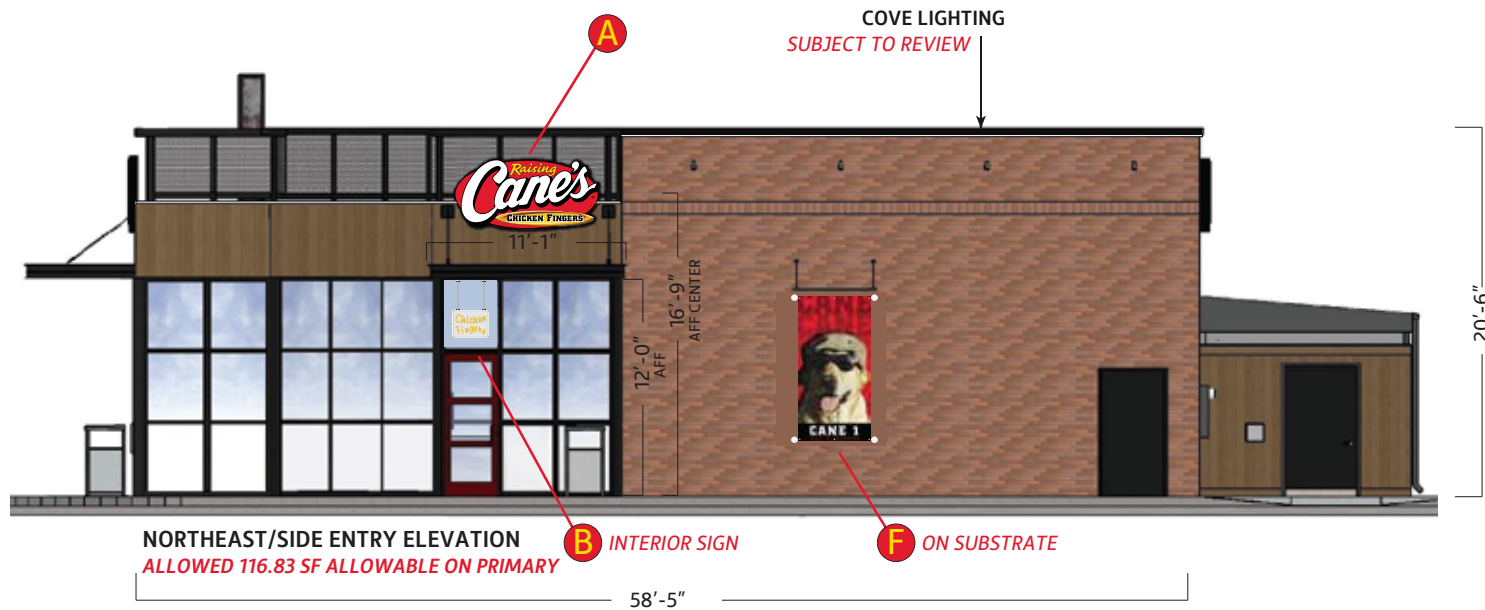
Scale: 3/32"=1'

	Location: Worcester, MA	Date: 08/13/2024	This document is the sole property of AGI, and all design, manufacturing, reproduction, use and sale rights regarding the same are expressly forbidden. It is submitted under a confidential relationship, for a special purpose, and the recipient, by accepting this document assumes custody and agrees that this document will not be copied or reproduced in whole or in part, nor its contents revealed in any manner or to any person except for the purpose for which it was tendered, nor any special features peculiar to this design be incorporated in other projects.	PAGE 2
	Site ID: RC1233	AGI PM: Scott Rogers		

ELEVATIONS



	QTY.	CODE	DESCRIPTION
A	4	WS-8FT	4x8 Wall Sign
B	1	ONS	Open Sign
C	1	CFNS	Chicken Fingers Neon Sign
D	1	PMRL	Painted Mural
E	1	PAMRL	Painted Arrow Mural
F	1	RD-1	Red Dog
G	2	DTMB	DT Menuboard
H	1	DTPS	Pre Sell Board
I	2	DTSP	Speaker Post
J	1	PYLON	Existing Pylon
K	1	DIR	Relocate Existing Directional (DT)
L	1	DIR	Existing Directional (Enter)



Scale: 3/32"=1'



Location: Worcester, MA

Date: 08/13/2024

Site ID: RC1233

AGI PM: Scott Rogers

This document is the sole property of AGI, and all design, manufacturing, reproduction, use and sale rights regarding the same are expressly forbidden. It is submitted under a confidential relationship, for a special purpose, and the recipient, by accepting this document assumes custody and agrees that this document will not be copied or reproduced in whole or in part, nor its contents revealed in any manner or to any person except for the purpose for which it was tendered, nor any special features peculiar to this design be incorporated in other projects.



J

CUTSHEET
Existing Pylon
REFURBISH EXISTING
PENDING ENGINEERING



EXISTING



PROPOSED
Scale: 3/32"=1'



Location: Worcester, MA

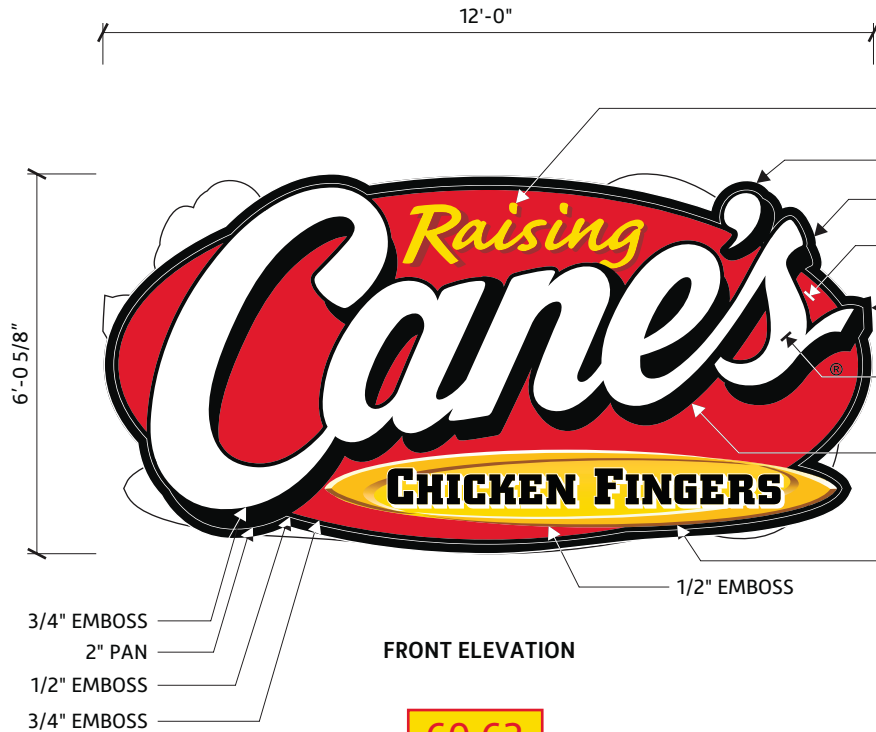
Date: 08/13/2024

This document is the sole property of AGI, and all design, manufacturing, reproduction, use and sale rights regarding the same are expressly forbidden. It is submitted under a confidential relationship, for a special purpose, and the recipient, by accepting this document assumes custody and agrees that this document will not be copied or reproduced in whole or in part, nor its contents revealed in any manner or to any person except for the purpose for which it was tendered, nor any special features peculiar to this design be incorporated in other projects.

Site ID: RC1233

AGI PM: Scott Rogers





FRONT ELEVATION

60.62

Sign Area

COPY & DROP SHADOW ARE VINYL TO MATCH
3M #3630-015 'YELLOW' & 3M #3630-73 'RED'

BORDER IS PAINTED 'BLACK'

.177" THERMO FORMED CLEAR POLYCARBONATE FACE

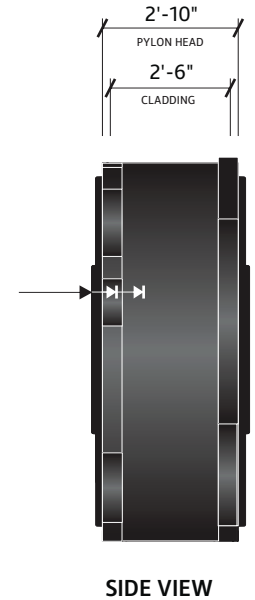
BACKGROUND IS SURFACE APPLIED TRANSLUCENT VINYL 3M #3630-53 'RED'

RETAINERS, RETURNS, & CENTER CABINET PAINTED 'BLACK' W/ GLOSS FINISH

DOUBLE EMBOSSED LETTERS ARE
PAINTED SECOND SURFACE 'WHITE'

EMBOSS AROUND LETTERS IS
PAINTED SECOND SURFACE 'BLACK'

EMBOSSED OVAL IS AS FOLLOWS:
-SIDES ARE PAINTED TO MATCH PANTONE #109C 'YELLOW'
-GRAPHICS ARE SECOND SURFACE APPLIED DIGITAL PRINT



SIDE VIEW

ELECTRICAL DATA

VOLTAGE	208
AMPERAGE	1.56

COLOR CHART

- 3M #3630-15 'YELLOW'
- 3M #3630-73 'RED'
- 3M #3630-53 'CARDINAL RED'



Location: Worcester, MA

Date: 08/13/2024

Site ID: RC1233

AGI PM: Scott Rogers

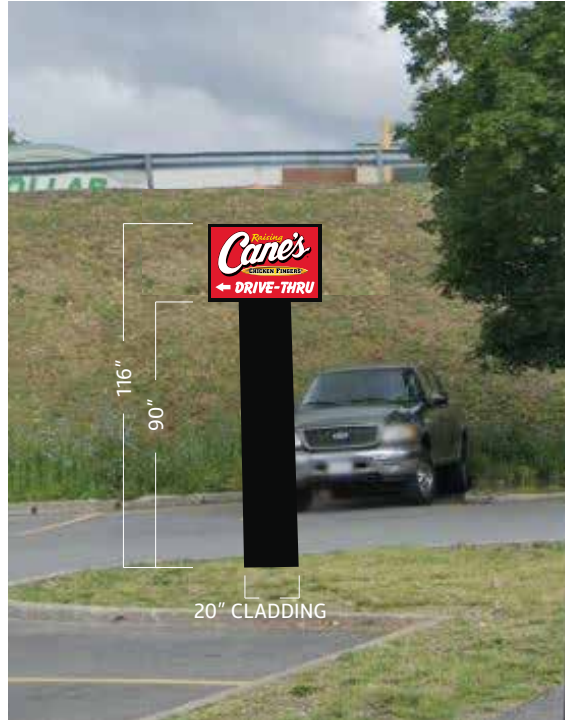
This document is the sole property of AGI, and all design, manufacturing, reproduction, use and sale rights regarding the same are expressly forbidden. It is submitted under a confidential relationship, for a special purpose, and the recipient, by accepting this document assumes custody and agrees that this document will not be copied or reproduced in whole or in part, nor its contents revealed in any manner or to any person except for the purpose for which it was tendered, nor any special features peculiar to this design be incorporated in other projects.



K



EXISTING



PROPOSED
Scale: 3/16"=1'

CUTSHEET

Existing Directional (Drive Thru Arrows)

RELOCATE SIGN
PENDING ENGINEERING



SIDE A



SIDE B

Scale: 3/4"=1'

REMOVE/RELOCATE EXISTING SIGN
IN SAME AREA DUE TO SITE WORK
ALUMINUM POLE COVER PAINTED BLACK.
SERVICE ELECTRICAL AS NEEDED.



Location: Worcester, MA

Date: 08/13/2024

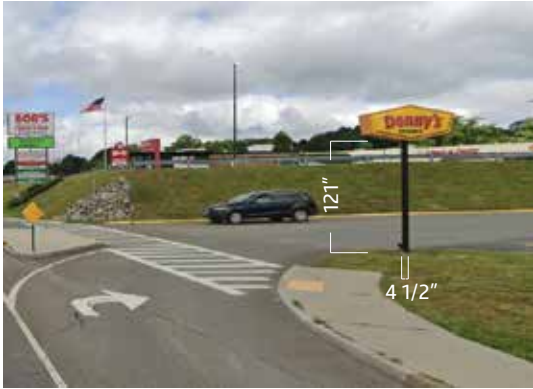
This document is the sole property of AGI, and all design, manufacturing, reproduction, use and sale rights regarding the same are expressly forbidden. It is submitted under a confidential relationship, for a special purpose, and the recipient, by accepting this document assumes custody and agrees that this document will not be copied or reproduced in whole or in part, nor its contents revealed in any manner or to any person except for the purpose for which it was tendered, nor any special features peculiar to this design be incorporated in other projects.

Site ID: RC1233

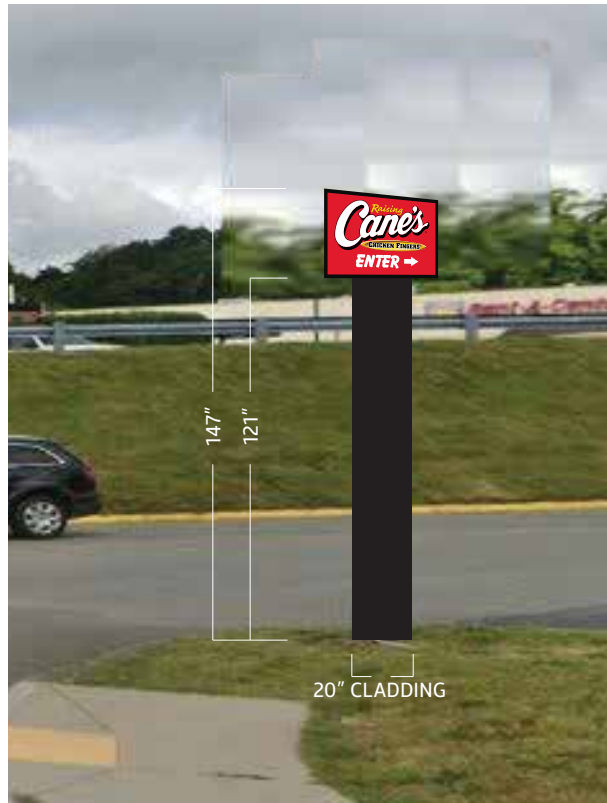
AGI PM: Scott Rogers



L



EXISTING



PROPOSED
Scale: 3/16"=1'

CUTSHEET

Existing Directional (Enter Arrows)

*REFURBISH EXISTING
PENDING ENGINEERING*



SIDE A



SIDE B
Scale: 3/4"=1'

*REMOVE/REPLACE EXISTING SIGN HEAD
ONTO EXISTING EXISTING SUPPORT POLE.
ALUMINUM POLE COVER PAINTED BLACK.
SERVICE ELECTRICAL AS NEEDED.*



Location: Worcester, MA

Date: 08/13/2024

This document is the sole property of AGI, and all design, manufacturing, reproduction, use and sale rights regarding the same are expressly forbidden. It is submitted under a confidential relationship, for a special purpose, and the recipient, by accepting this document assumes custody and agrees that this document will not be copied or reproduced in whole or in part, nor its contents revealed in any manner or to any person except for the purpose for which it was tendered, nor any special features peculiar to this design be incorporated in other projects.

Site ID: RC1233

AGI PM: Scott Rogers



COPY & DROP SHADOW ARE AS FOLLOWS: 'RAISING' IS FIRST SURFACE APPLIED TRANSLUCENT VINYL 3M #3630-015 'YELLOW', DROP SHADOW IS FIRST SURFACE APPLIED TRANSLUCENT VINYL 3M #3630-53 'CARDINAL RED'

BORDER IS PAINTED 'BLACK'
BACKGROUND IS SURFACE APPLIED TRANSLUCENT VINYL 3M #3630-73 'RED'

.150" THERMO FORMED CLEAR POLYCARBONATE FACE REGISTER MARK IS PAINTED 'BLACK'

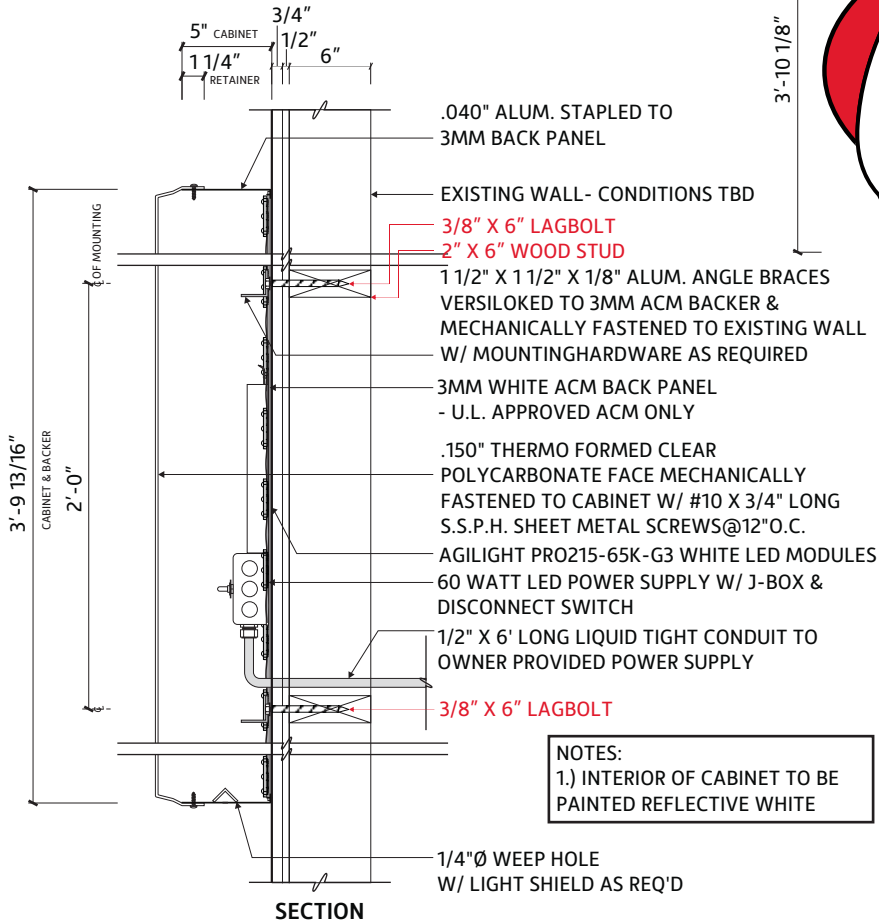
DOUBLE EMBOSSED LETTERS ARE PAINTED SECOND SURFACE 'WHITE'
EMBOSS AROUND LETTERS IS PAINTED SECOND SURFACE 'BLACK'

EMBOSSED SURFBOARD IS AS FOLLOWS:
-SIDES ARE PAINTED TO MATCH PANTONE #109C 'YELLOW'
-GRAPHICS ARE SECOND SURFACE APPLIED DIGITAL PRINT



FRONT ELEVATION

24.14
Sign Area



NOTES:
1.) INTERIOR OF CABINET TO BE PAINTED REFLECTIVE WHITE

ELECTRICAL DATA	
VOLTAGE	120
AMPERAGE	1.8

COLOR CHART	
	3M #3630-15 'YELLOW'
	3M #3630-73 'RED'
	3M #3630-53 'CARDINAL RED'



Location: Worcester, MA

Date: 08/13/2024

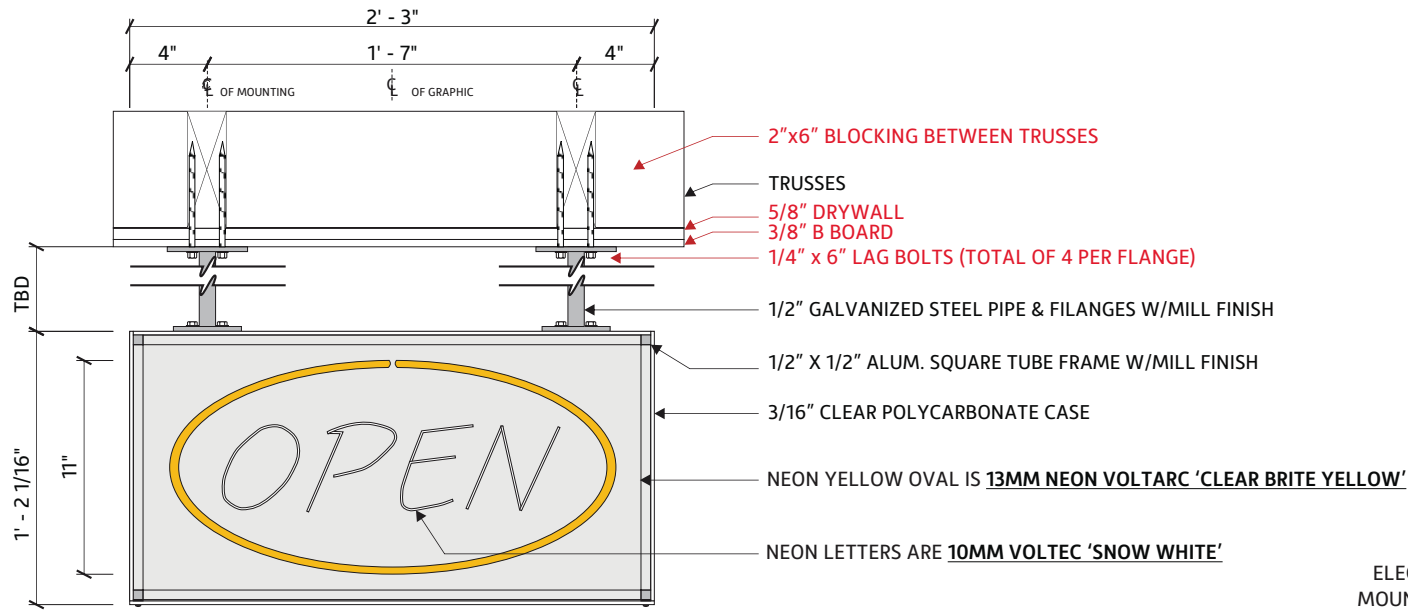
Site ID: RC1233

AGI PM: Scott Rogers

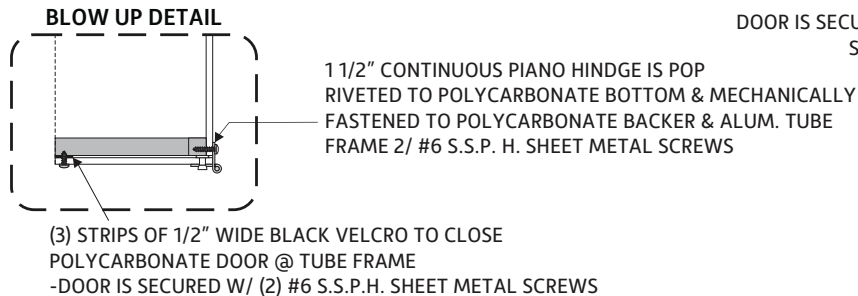
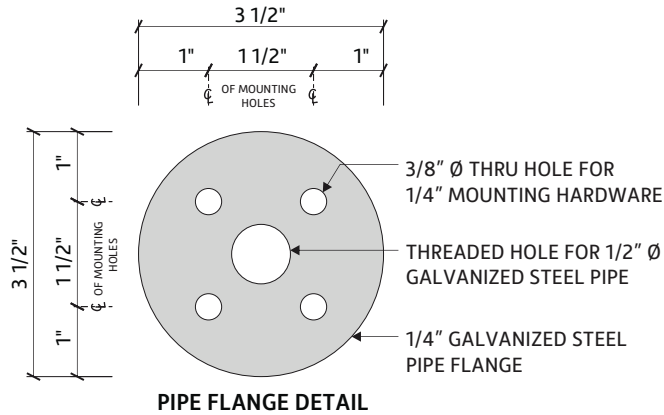
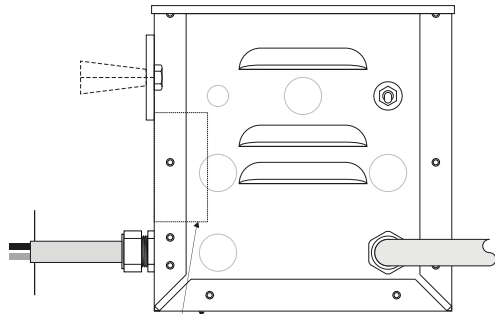
This document is the sole property of AGI, and all design, manufacturing, reproduction, use and sale rights regarding the same are expressly forbidden. It is submitted under a confidential relationship, for a special purpose, and the recipient, by accepting this document assumes custody and agrees that this document will not be copied or reproduced in whole or in part, nor its contents revealed in any manner or to any person except for the purpose for which it was tendered, nor any special features peculiar to this design be incorporated in other projects.



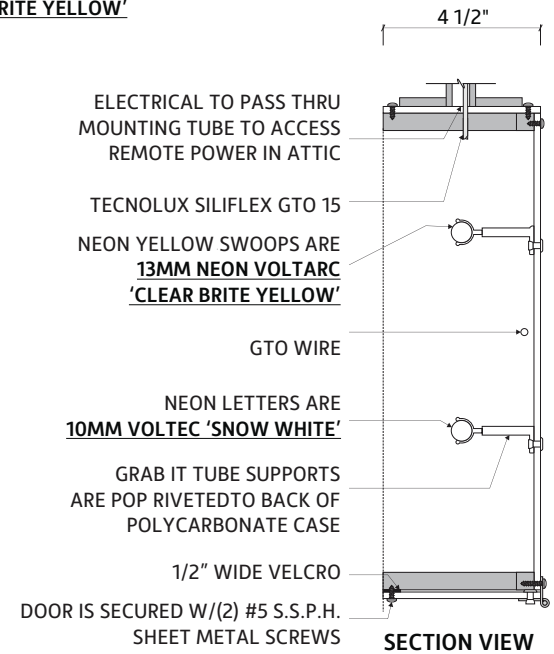
B



NOTES:
 1.) TRANSFORMER IS MOUNTED REMOTELY
 2.) CONNECT 14 GA GROUND WIRE TO EACH MOUNTING FLANGE & TO GROUND LUG PROVIDED BY TRANSFORMER.
 -CONNECT TRANSFORMER GROUND TO SERVICE GROUND AT PANEL BOX



CUTSHEET
ONS (H)
INTERIOR SIGN
PIPE LENGTH TO BE VERIFIED



ELECTRICAL DATA	
VOLTAGE	120
AMPERAGE	2.1



Location: Worcester, MA

Date: 08/13/2024

Site ID: RC1233

AGI PM: Scott Rogers

This document is the sole property of AGI, and all design, manufacturing, reproduction, use and sale rights regarding the same are expressly forbidden. It is submitted under a confidential relationship, for a special purpose, and the recipient, by accepting this document assumes custody and agrees that this document will not be copied or reproduced in whole or in part, nor its contents revealed in any manner or to any person except for the purpose for which it was tendered, nor any special features peculiar to this design be incorporated in other projects.



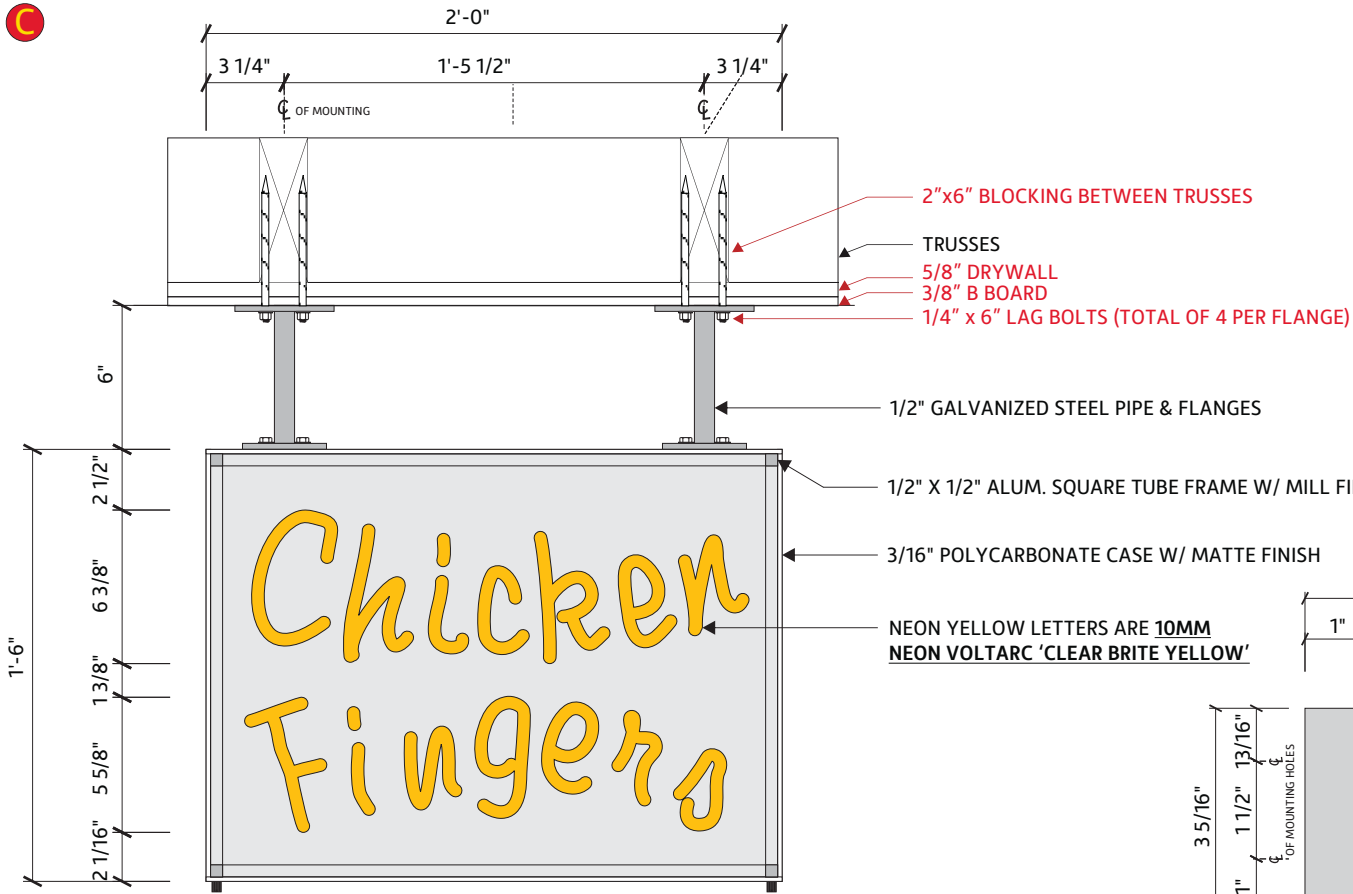
C

CUTSHEET

"Original" Chicken Fingers Neon Sign

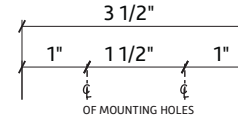
INTERIOR SIGN

PIPE LENGTH TO BE VERIFIED

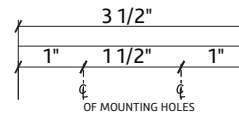
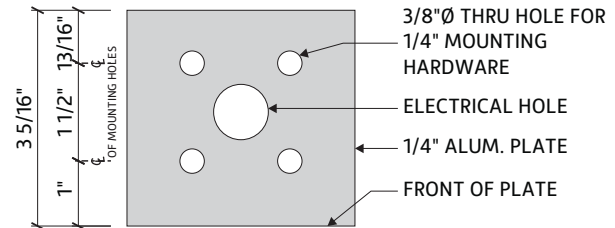


FRONT ELEVATION

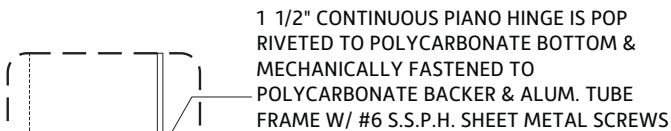
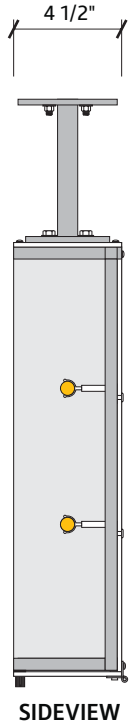
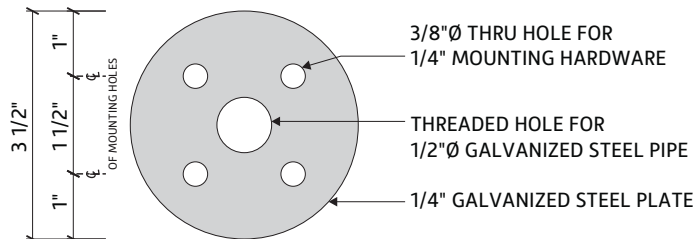
Scale: 1 1/2" = 1'



INTERIOR PLATE DETAIL



EXTERIOR PLATE DETAIL



(1) STRIP OF 1/2" WIDE CLEAR 3M DUAL LOCK POLYCARBONATE DOOR @ TUBE FRAME @ CENTER ONLY

3/16" POLYCARBONATE CASE W/ MATTE FINISH IS OPEN @ FRONT W/ #10-32 X 5/8" LONG 18-8 S.S. KNURLED HEAD CAPTIVE PANEL SCREW/ SLOTTED DRIVE MCMASER CARR #91035A508W/ 18-8 S.S. RETAINER FOR 10-32 THREAD MCMASER CARR #91065A720

ELECTRICAL DATA	
VOLTAGE	120
AMPERAGE	2.1



Location: Worcester, MA

Date: 08/13/2024

Site ID: RC1233

AGI PM: Scott Rogers

This document is the sole property of AGI, and all design, manufacturing, reproduction, use and sale rights regarding the same are expressly forbidden. It is submitted under a confidential relationship, for a special purpose, and the recipient, by accepting this document assumes custody and agrees that this document will not be copied or reproduced in whole or in part, nor its contents revealed in any manner or to any person except for the purpose for which it was tendered, nor any special features peculiar to this design be incorporated in other projects.



D

CUTSHEET
PMRL (0915)
VARIANCE REQUIRED

15'-6"

9'-0"



139.50

Square Footage

FOR ARTIST RENDERING USE ONLY
MURAL PROVIDED BY OTHER VENDOR



Location: Worcester, MA

Date: 08/13/2024

Site ID: RC1233

AGI PM: Scott Rogers

This document is the sole property of AGI, and all design, manufacturing, reproduction, use and sale rights regarding the same are expressly forbidden. It is submitted under a confidential relationship, for a special purpose, and the recipient, by accepting this document assumes custody and agrees that this document will not be copied or reproduced in whole or in part, nor its contents revealed in any manner or to any person except for the purpose for which it was tendered, nor any special features peculiar to this design be incorporated in other projects.

PAGE 11





62.42

Square Footage



Location: Worcester, MA

Date: 08/13/2024

Site ID: RC1233

AGI PM: Scott Rogers

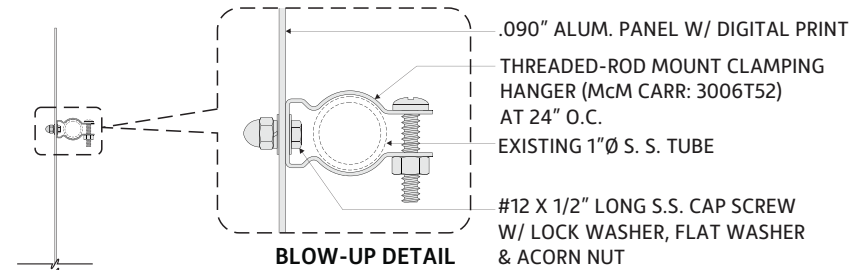
This document is the sole property of AGI, and all design, manufacturing, reproduction, use and sale rights regarding the same are expressly forbidden. It is submitted under a confidential relationship, for a special purpose, and the recipient, by accepting this document assumes custody and agrees that this document will not be copied or reproduced in whole or in part, nor its contents revealed in any manner or to any person except for the purpose for which it was tendered, nor any special features peculiar to this design be incorporated in other projects.



F

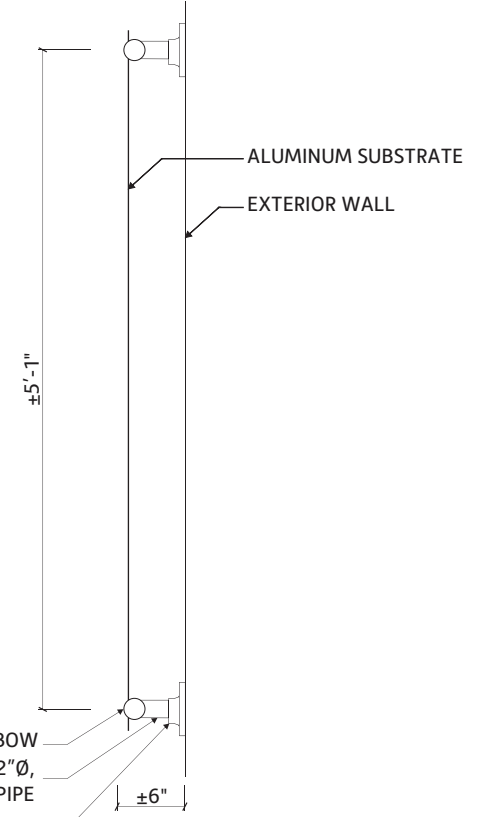
CUTSHEET

Red Dog on Substrate



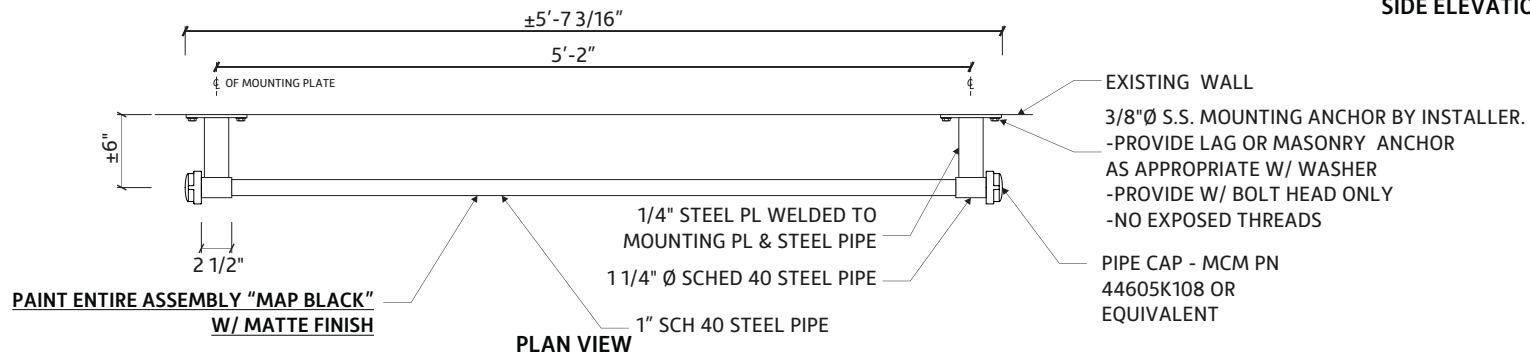
32.00
Square Footage

SIDE VIEW



SIDE ELEVATION

THIS IS A DIGITAL PRINT ON ALUMINUM SUBSTRATE AND RIGID.



PLAN VIEW



Location: Worcester, MA

Date: 08/13/2024

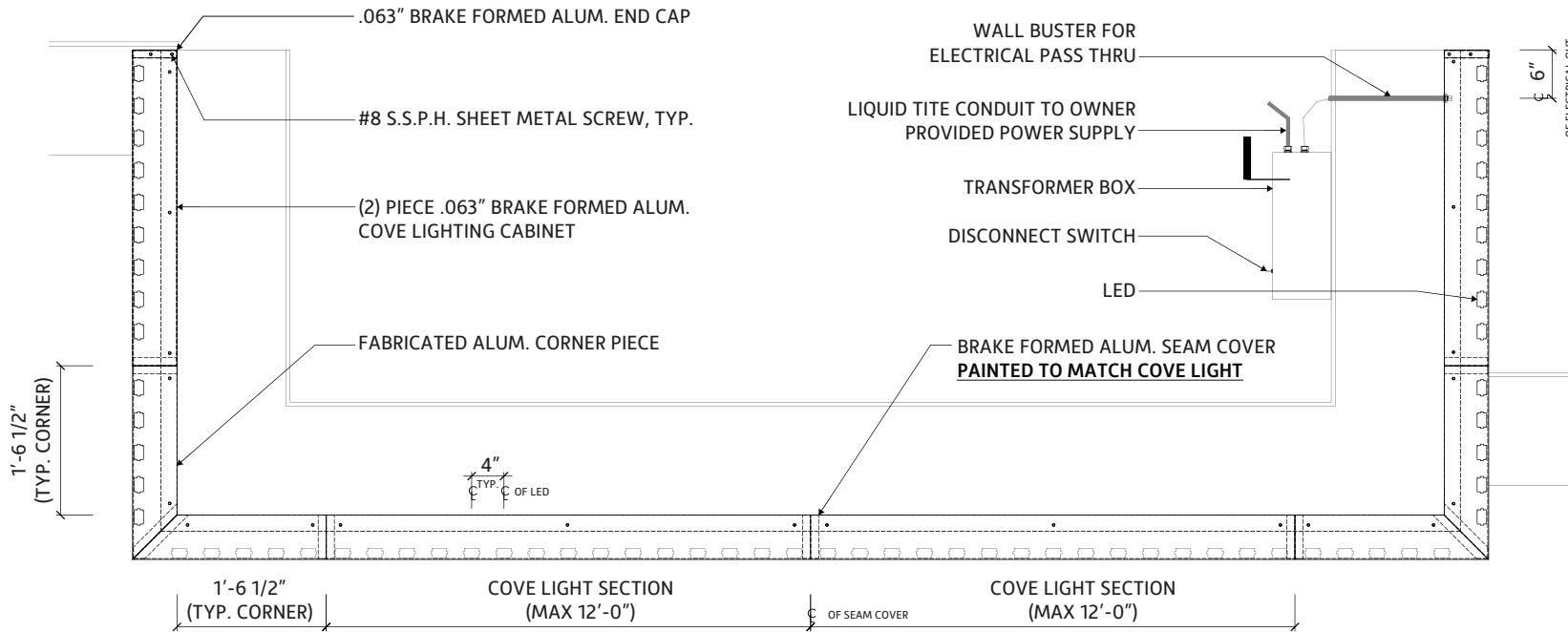
This document is the sole property of AGI, and all design, manufacturing, reproduction, use and sale rights regarding the same are expressly forbidden. It is submitted under a confidential relationship, for a special purpose, and the recipient, by accepting this document assumes custody and agrees that this document will not be copied or reproduced in whole or in part, nor its contents revealed in any manner or to any person except for the purpose for which it was tendered, nor any special features peculiar to this design be incorporated in other projects.

Site ID: RC1233

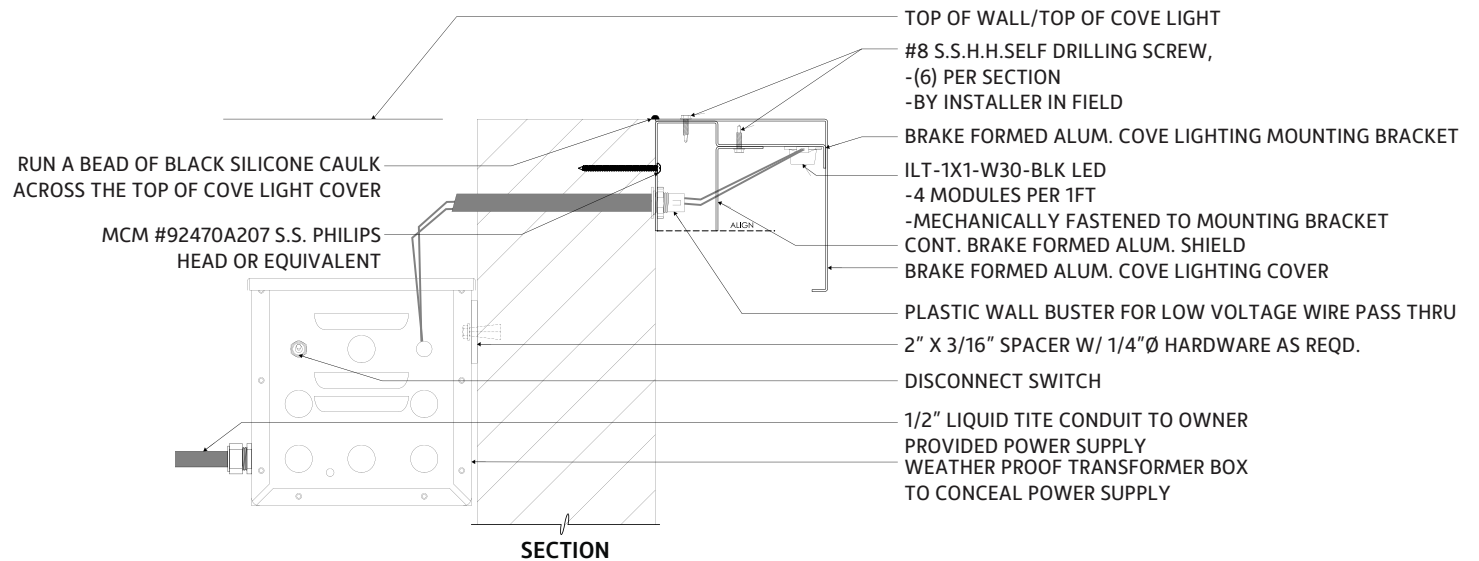
AGI PM: Scott Rogers



CUTSHEET
Cove Lighting ILT
SUBJECT TO REVIEW



STRUCTURAL PLAN VIEW



SECTION



Location: Worcester, MA

Date: 08/13/2024

This document is the sole property of AGI, and all design, manufacturing, reproduction, use and sale rights regarding the same are expressly forbidden. It is submitted under a confidential relationship, for a special purpose, and the recipient, by accepting this document assumes custody and agrees that this document will not be copied or reproduced in whole or in part, nor its contents revealed in any manner or to any person except for the purpose for which it was tendered, nor any special features peculiar to this design be incorporated in other projects.

Site ID: RC1233

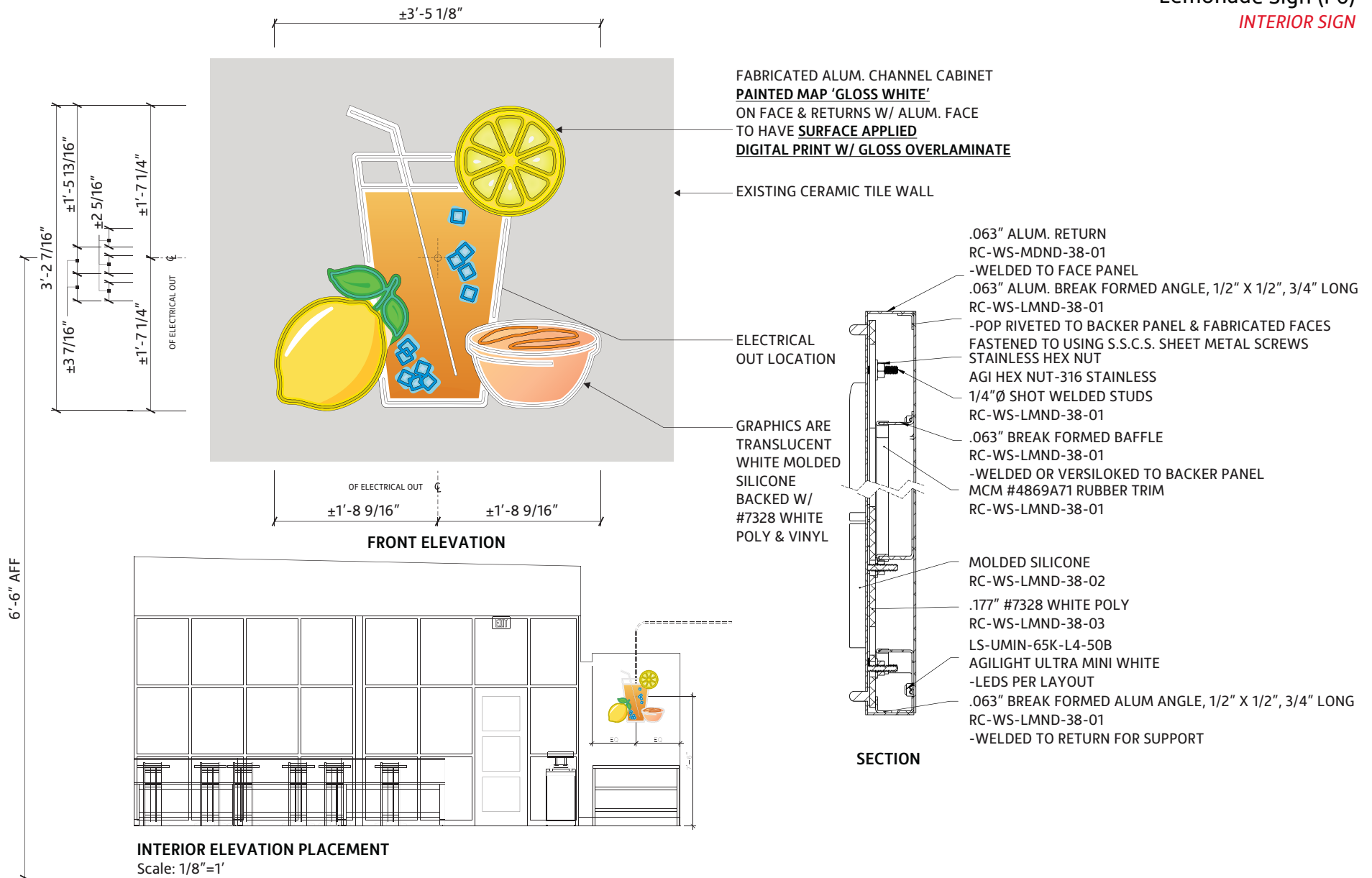
AGI PM: Scott Rogers



CUTSHEET

Lemonade Sign (P6)

INTERIOR SIGN



Location: Worcester, MA

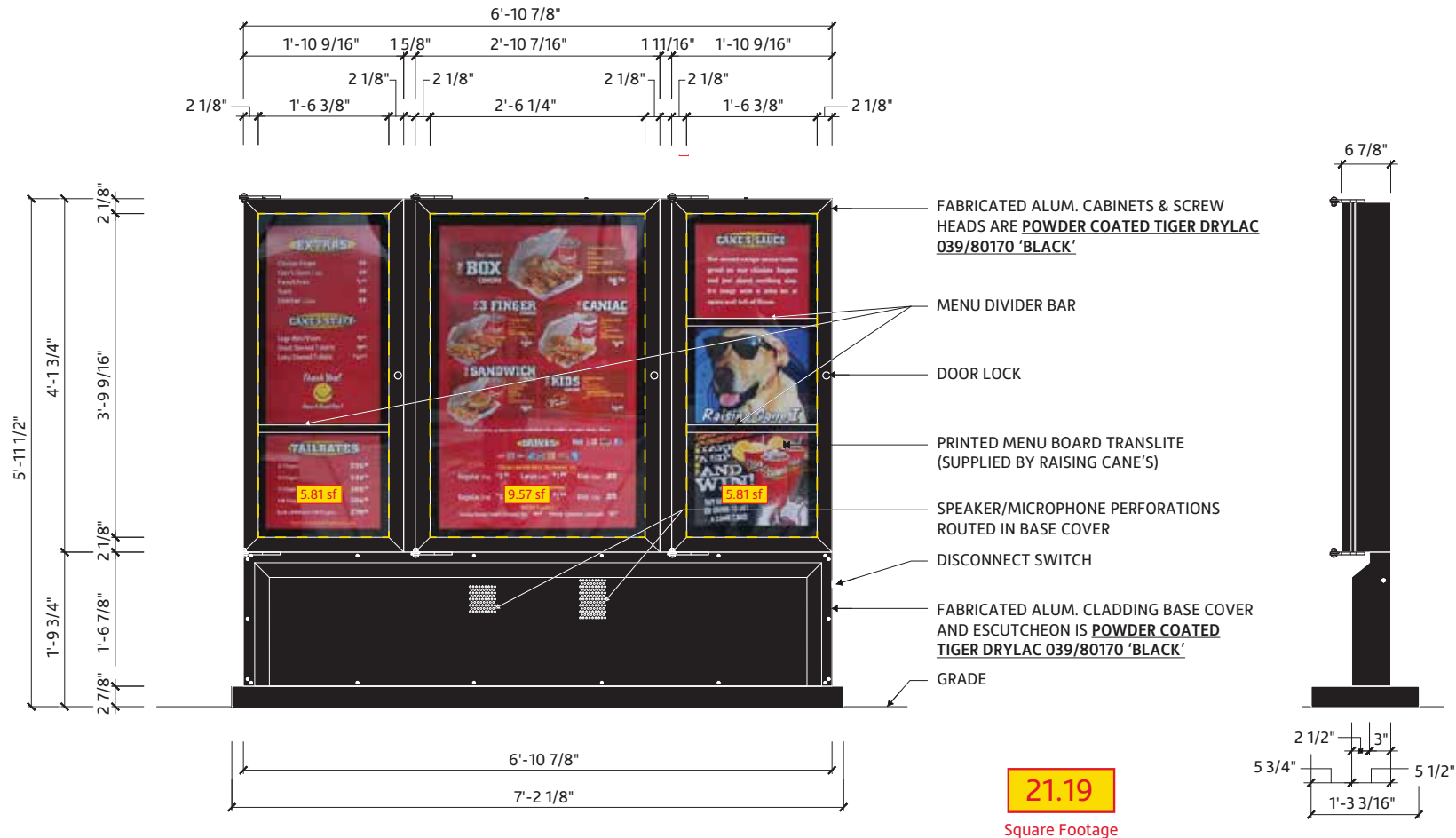
Date: 08/13/2024

Site ID: RC1233

AGI PM: Scott Rogers

This document is the sole property of AGI, and all design, manufacturing, reproduction, use and sale rights regarding the same are expressly forbidden. It is submitted under a confidential relationship, for a special purpose, and the recipient, by accepting this document assumes custody and agrees that this document will not be copied or reproduced in whole or in part, nor its contents revealed in any manner or to any person except for the purpose for which it was tendered, nor any special features peculiar to this design be incorporated in other projects.





Scale: 1/2"=1'



Location: Worcester, MA

Date: 08/13/2024

Site ID: RC1233

AGI PM: Scott Rogers

This document is the sole property of AGI, and all design, manufacturing, reproduction, use and sale rights regarding the same are expressly forbidden. It is submitted under a confidential relationship, for a special purpose, and the recipient, by accepting this document assumes custody and agrees that this document will not be copied or reproduced in whole or in part, nor its contents revealed in any manner or to any person except for the purpose for which it was tendered, nor any special features peculiar to this design be incorporated in other projects.





8.31
Square Footage



Location: Worcester, MA

Date: 08/13/2024

Site ID: RC1233

AGI PM: Scott Rogers

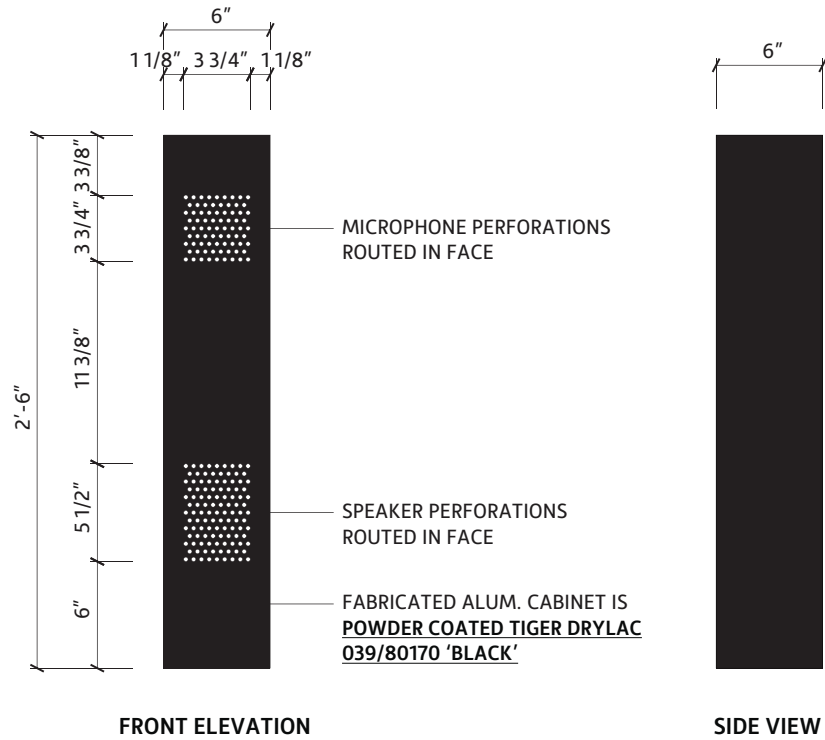
This document is the sole property of AGI, and all design, manufacturing, reproduction, use and sale rights regarding the same are expressly forbidden. It is submitted under a confidential relationship, for a special purpose, and the recipient, by accepting this document assumes custody and agrees that this document will not be copied or reproduced in whole or in part, nor its contents revealed in any manner or to any person except for the purpose for which it was tendered, nor any special features peculiar to this design be incorporated in other projects.





CUTSHEET

Speaker Post



Location: Worcester, MA

Date: 08/13/2024

Site ID: RC1233

AGI PM: Scott Rogers

This document is the sole property of AGI, and all design, manufacturing, reproduction, use and sale rights regarding the same are expressly forbidden. It is submitted under a confidential relationship, for a special purpose, and the recipient, by accepting this document assumes custody and agrees that this document will not be copied or reproduced in whole or in part, nor its contents revealed in any manner or to any person except for the purpose for which it was tendered, nor any special features peculiar to this design be incorporated in other projects.

PAGE 18



SURROUNDING SITE PHOTOS



Location: Worcester, MA

Date: 08/13/2024

Site ID: RC1233

AGI PM: Scott Rogers

This document is the sole property of AGI, and all design, manufacturing, reproduction, use and sale rights regarding the same are expressly forbidden. It is submitted under a confidential relationship, for a special purpose, and the recipient, by accepting this document assumes custody and agrees that this document will not be copied or reproduced in whole or in part, nor its contents revealed in any manner or to any person except for the purpose for which it was tendered, nor any special features peculiar to this design be incorporated in other projects.



SURROUNDING SITE PHOTOS



Location: Worcester, MA

Date: 08/13/2024

Site ID: RC1233

AGI PM: Scott Rogers

This document is the sole property of AGI, and all design, manufacturing, reproduction, use and sale rights regarding the same are expressly forbidden. It is submitted under a confidential relationship, for a special purpose, and the recipient, by accepting this document assumes custody and agrees that this document will not be copied or reproduced in whole or in part, nor its contents revealed in any manner or to any person except for the purpose for which it was tendered, nor any special features peculiar to this design be incorporated in other projects.

